

Microchilus tessellatus Ormerod, *sp. nov.*
TYPE: COSTA RICA. Limon: Cordillera de Talamanca, along ridge between Quebrada Camagre and Rio Barbilla, 180–480 m, 9 September 1988, *M. Grayum* 8925 with *G. Herrera*, *R. Robles* & *A. Martinez* (Holotype: MO). Fig. 32.

Affinis M. tridax (Rchb.f.) Ormerod *sed caulibus 11–12 foliatis (non 3–6 foliatis) et foliis tessellatus (non concoloribus) differt.*

Terrestrial herb. Rhizome creeping, rooting at nodes, terete, 10.00 × 0.10–0.25 cm; internodes

0.8–1.3 cm long. Stem erect to partly decumbent in basal half, terete, pinkish, 10–12-leaved, $7.5\text{--}7.6 \times 0.17\text{--}0.30$ cm; internodes 0.6–1.2 cm long. Leaves obliquely ovate to ovate-oblong, acute, checkered light and dark green above, $3.2\text{--}6.5 \times 1.3\text{--}3.1$ cm; petiole and sheath 1.2–1.9 cm long. Inflorescence pubescent, tinged pale salmon-pink, 26.5–35.5 cm long; peduncle 14.0–17.5 cm long; sheathing bracts 3–4, scattered, to 1.3 cm long; rachis laxly to sublaxly ca. 40-flowered, 12.5–18.0 cm long; floral bracts all damaged, tinged pale salmon-pink. Pedicellate ovary subcylindric, laxly pubescent, 4.5 mm long. Flowers externally sparsely pubescent, white, sepals magenta-tinged externally. Dorsal sepal ovate-oblong, acute, 3.8×1.5 mm. Lateral sepals obliquely ligulate-lanceolate, obtuse, 3.9×1.0 mm. Petals ligulate-oblong, subacute, 3.8×0.8 mm. Labellum spurred, trilobed, joined to column for 1 mm; spur subcylindric in lateral view, obtuse, 2 mm long; hypochile ovate, 2.1 mm long, 2 mm wide basally, 0.7 mm wide apically; epichile transversely ligulate, minutely pubescent, 2.8 mm wide, lobules unequal. Column 1.9 mm long.

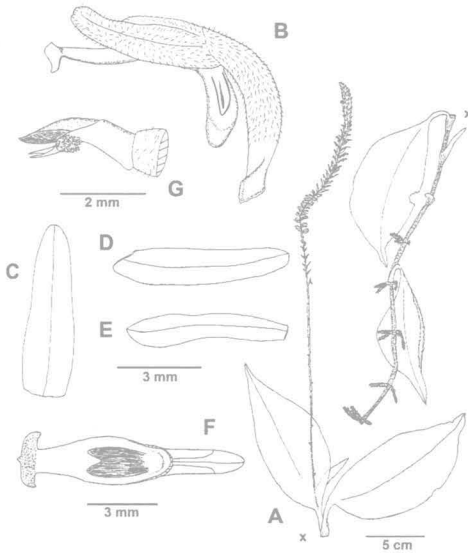
Distribution: Costa Rica; Panama.

Habitat: low swampy areas, 180–480 m (holotype); wet forest, 200–400 m.

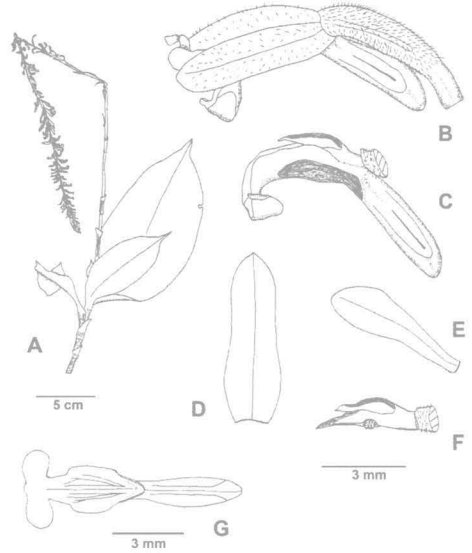
Specimen examined: PANAMA. Cocle: Caribbean side of divide at El Cope, 200–400 m, 4 February 1983, *C. Hamilton & G. Davidse* 2692 (MO).

This species is related to *M. tridax* (Rchb.f.) Ormerod but differs from it in having 10–12-leaved stems and tessellated leaves. In *M. tridax* the stems are 3–6-leaved and the leaves are concolorous (often purplish). *Microchilus xeranthum* Ormerod from Colombia is also a 12-leaved species but its leaves are concolorous and the flowers have a cuneate (not ovate) labellum hypochile and 2 mm (not 2.8 mm) wide epichile.

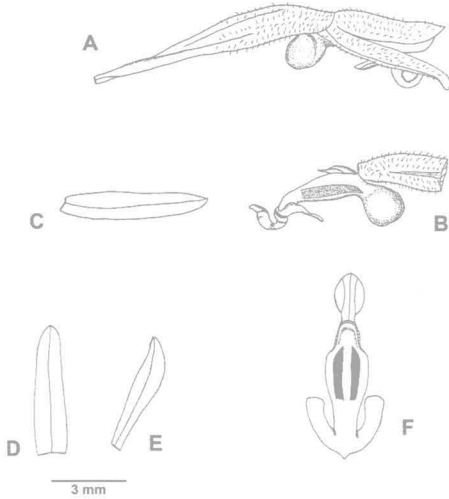
29



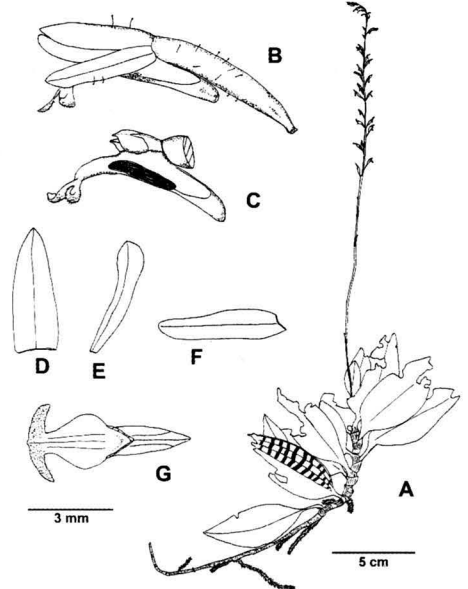
30



31



32



FIGURES 29–32. *Microchilus* species. **29**, *M. puyoensis* var. *brevipedunculatus*. A, plant; B, flower; C, dorsal sepal; D, lateral sepal; E, petal; F, labellum and spur; G, column (drawn from holotype). **30**, *M. subquadratus*. A, plant; B, flower; C, flower minus tepals; D, dorsal sepal; E, petal; F, column; G, labellum and spur (drawn from holotype). **31**, *M. tequendamae*. A, flower; B, flower minus tepals; C, lateral sepal; D, dorsal sepal; E, petal; F, labellum and spur (drawn from holotype). **32**, *M. tessellatus*. A, plant; B, flower; C, flower minus tepals; D, dorsal sepal; E, petal; F, lateral sepal; G, labellum and spur (drawn from holotype).